



Stainless Steel Lift Floor Platform for Hygienic Applications

Defender 5000 Series Stainless Steel Lift Platform combines durable construction and an ultra-low height. Featuring a stainless steel platform, built-in ramp, four IP68 stainless steel load cells (with adjustable feet) - the ultra-low design simplifies the job of moving goods on and off the platform.

Unique Features:

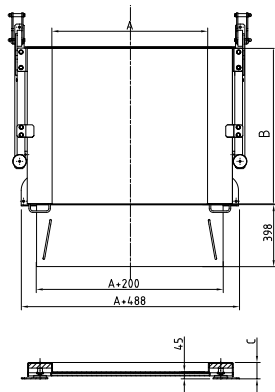
- **Defender Series Lift Stainless Steel Platforms** – Hygienic design allows for quick and easy washdown cleaning in sanitary applications. Lifting the front handles tilts the entire scale up providing complete access to the floor and underside of the scale.
- **Install Easily with EasyConnect™** – Platforms are equipped with a 5 m double-shielded EasyConnect™ cable, which allows instant configuration with Defender 5000 (TD52) indicators for quick installation.
- **2 Models and 2 Different Sizes and Capacities for Industrial Applications** - Platform is available in 2 different models with 1000 x 1000 mm and 1250 x 1250 mm sizes and capacities of 600 to 1500 kg, allowing greater flexibility to best suit your weighing needs.

DEFENDER® 5000 Lift Platform

Platform Models	DFL600WR	DFL1500WL
Platform Dimensions (mm)	1000 x 1000	1250 x 1250
Platform Height (mm)	45	45
Material	304 Stainless steel, bead blasted, non-treaded surface	
Top plate thickness (mm)	6	6
Platform Capacity (kg)	600	1500
Maximum Central Load	150% of rated capacity	150% of rated capacity
Feet	4 x swivel design, stainless steel with rubber caps, adjustable height	
Load Cell Model	OHAUS SBH, stainless steel, OIML approved	
Load Cell Capacity Emax (kg)	500	1000
Load Cell Safe Overload Limit	150% of Emax	
Load Cell Protection	P68, laser-weld hermetically sealed	
Load Cell Output Impedance	350 Ω ± 1 Ω	
Load Cell Cable Length	3 m	
Junction Box	IP67, 304 stainless steel, with double-shielded 5m long cable	
Operating Temperature	-10 °C to 40 °C	
Platform Net Weight (kg)	223	313
Platform Shipping Weight (kg)	268	368
Platform Shipping Dimensions(W x D x H)	1570 x 1290 x 390	1820 x 1540 x 390
Ramp	One ramp standard, the other ramp available as accessory	
Compatible OHAUS Indicator	TD52P/TD52XW (with EasyConnect™ feature) sold separately	

Outline Dimensions

Lift					
Model	A (mm)	B (mm)	C (mm)	E (mm)	H (mm)
DFL600WR	1000	1000	116	1100	35
DFL1500WL	1250	1250	116	1350	45



Accessories

30542186	Ramp DFL SS 600 kg 1000 mm
30542187	Ramp DFL SS 1t 1250 mm
30550093	Stop Bar DFD DFL SS 1 m
30550094	Stop Bar DFD DFL SS 1.25 m
30531244	Floor column kit, Painted
30539553	Floor column kit, SST

Compliance

- Metrology: OIML R60 certified load cells
- Compliance Marks: CE, WEEE

80776563 © Copyright OHAUS Corporation

OHAUS Europe GmbH
Heuwinkelstrasse 3,
8606 Nänikon,
Switzerland

e-mail: ssc@ohaus.com
Tel: 0041 22 567 53 19
e-mail: tsc@ohaus.com
Tel: 0041 22 567 53 20

www.ohaus.com

The management system
governing the manufacture
of this product is
ISO 9001:2015 certified.

